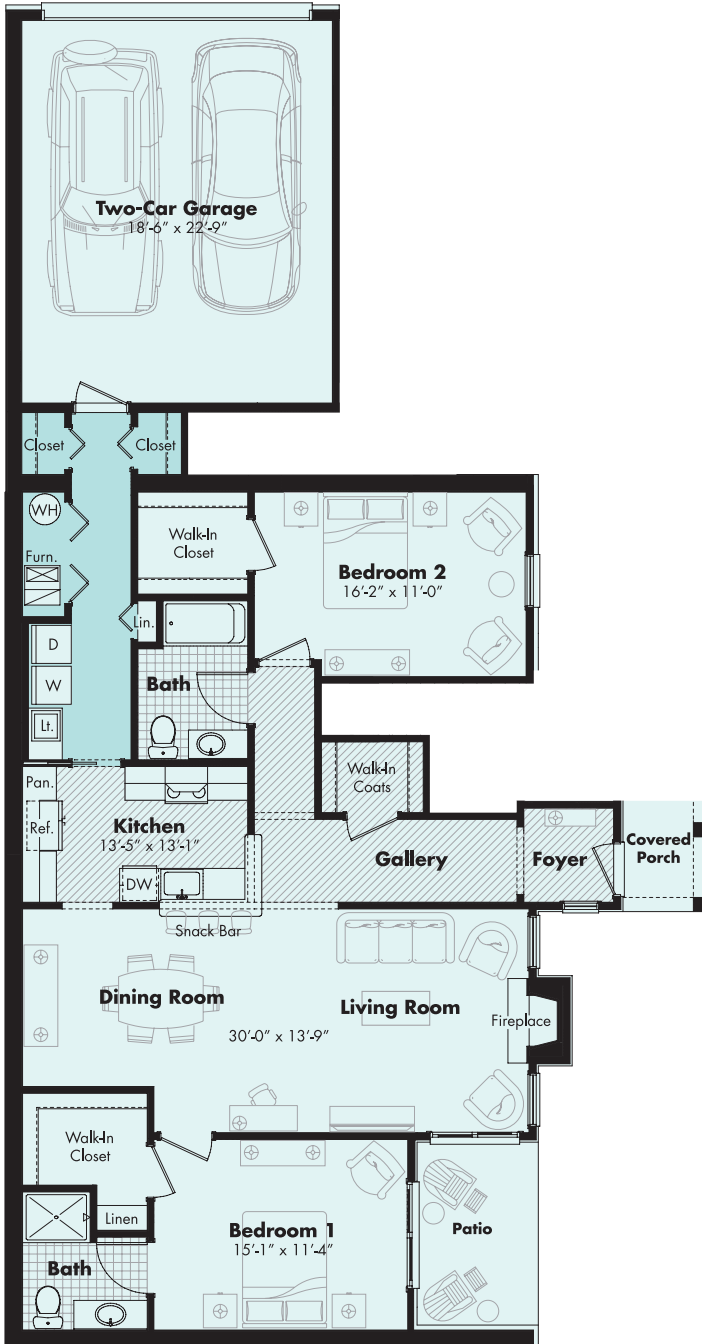




THE AVIGNON 1,587 SF

2 BEDROOM + 2 BATH + 2 CAR GARAGE

- Easy access first-floor residence with inviting, covered entry porch
- 2 bedrooms with room to spare for your comfort
- 2 luxurious full baths where you can soak away your day's worries
- Spacious living room with cozy gas fireplace to enjoy on chilly nights and special occasions
- Convenient snack bar for entertaining guests or grabbing a quick bite
- Full-size washer and dryer plus laundry tub
- Master bedroom features private bath, walk-in closet, and access to the covered patio perfect for savoring a morning cup of coffee
- Second bedroom, which can also be used as a den, features a walk-in closet and adjacent full bath
- Attached two-car garage provides protection from the elements and the convenience of being a short distance to the kitchen for unloading groceries
- The garage and closets add extra space for stowing your gear



09/12/18

MONTCLAIR AT PARTRIDGE CREEK CLINTON TWP., MICHIGAN 48038

PLEASE NOTE: Room dimensions, materials, design features, finishes and specifications are subject to change without notice or obligation. Renderings and photographs are intended to provide a general "look and feel" and are not intended to represent the finished product.

MOCERI

STRUCTURE · INTEGRITY · TRADITION®

Michigan's Legendary Dream Builder